

GLENCOE TOWNSHIP

Each township has six files containing six sections in each, and one file containing all 36 sections.

Glencoe01to06.pdf

Glencoe07to12.pdf

Glencoe13to18.pdf

Glencoe19to24.pdf

Glencoe25to30.pdf

Glencoe31to36.pdf

GlencoeAll36.pdf

The points are listed starting with the point above the SE corner and continuing in a counter-clockwise rotation around the section. This normally begins with the East point, Northeast, then North, but may also include Witness Corners, and/or Meander Corners.

Definitions

Witness Corner: A witness corner “stands in” when the true corner cannot be monumented or occupied because of difficult terrain or obstruction of the corner sight. The witness corner must be on the section line and is usually 5 or 10 chains away from the true corner.

Meander Corner: The intersection of a township, range, or section line and the banks of a navigable stream or meandering body of water.

EAST QUARTER corner, Section 7, Township 115 North, Range 28 West

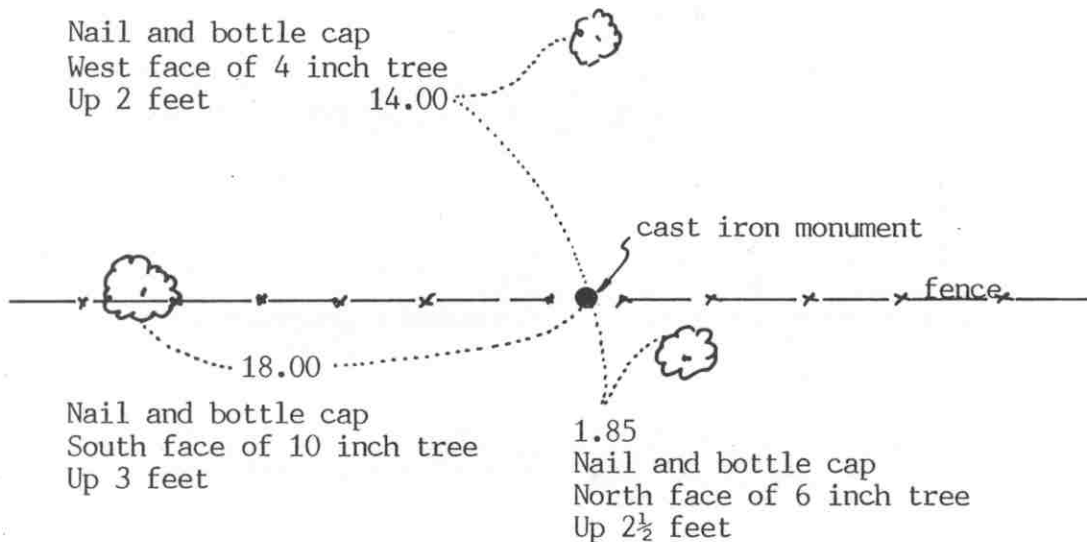
Certificate of Location of Government Corner

SKETCH OF REFERENCE TIES
(NO SCALE)



SECTION 7

SECTION 8



Statement of evidence relative to this corner location on sheet 2

I hereby certify that this document was prepared by me or under my direct supervision.

Willard Pellinen

Willard Pellinen
McLeod County Surveyor
License No. 9626

Date Feb. 20, 1993

OFFICE OF THE COUNTY RECORDER
MCLEOD COUNTY, MINNESOTA.

I hereby certify that this document was filed in this office at 9 o'clock A. M. on the 4th day of March, 1993.

Armen Ostlie Gulder County Recorder

By _____, Deputy

Document No. 250776

EAST QUARTER corner, Section 7, Township 115 North, Range 28 West

Certificate of Location of Government Corner

July, 1855. A. H. Runyon of the General Land Office set a post and marked a 17 inch and an 18 inch oak for bearing trees.

March 3, 1972. Mr. Ernest Beihoffer, 72 years old, and had lived in the Southwest Quarter of Section 8 all his life, said the fence intersection has been accepted as the correct quarter corner by all adjoining land owners.

April 27, 1972. McCombs Knutson Associates (Dickman Knutson, county surveyor) searched the area for the corner. They found an 8 inch diameter stone down 6 inches at the fence intersection. Mr. Arnold Thiesfeldt, who had lived in the Southeast Quarter of Section 7 for 35 years said the fence intersection is the correct quarter corner.

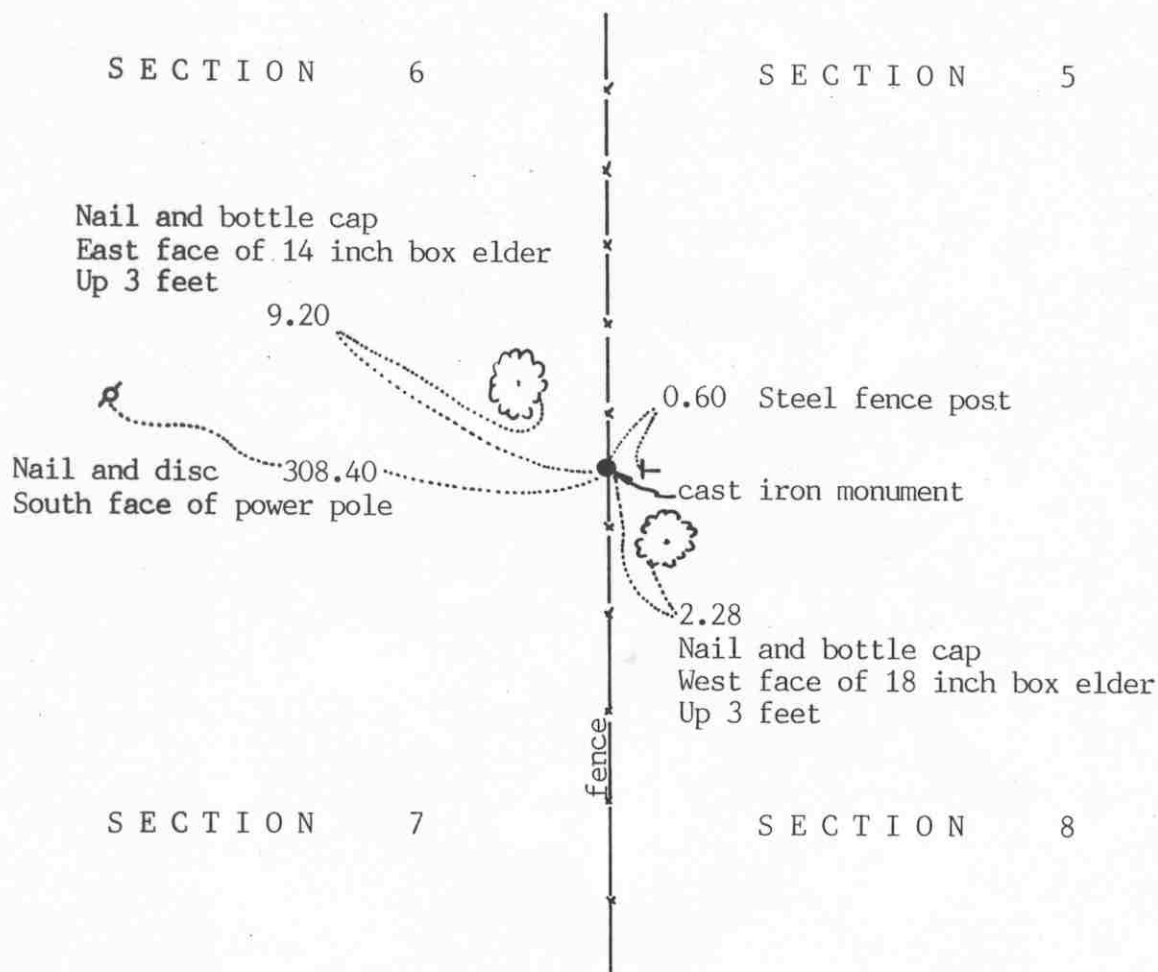
November 13, 1973. Knutson replaced the stone with a McLeod County cast iron monument and took available reference ties.

January 18, 1993. We found the monument in good condition but all the old reference ties had been destroyed. We took new available ties.

The monument set by Knutson is accepted as marking the correct position of the quarter corner. It perpetuates the location of an older monument, the stone, and it fits long standing occupation lines, the fences.

Certificate of Location of Government Corner

SKETCH OF REFERENCE TIES (NO SCALE)



Statement of evidence relative to this corner location on sheet 2

I hereby certify that this document was prepared by me or under my direct supervision.

Willard Pellinen
 Willard Pellinen
 McLeod County Surveyor
 License No. 9626

Date Feb. 20, 1992

OFFICE OF THE COUNTY RECORDER
 MCLEOD COUNTY, MINNESOTA.

I hereby certify that this document was filed in this office at 9 o'clock A. M. on the 6th day of May, 1992.

Carmen Bellie, County Recorder

By _____, Deputy

Document No. 245075

Certificate of Location of Government Corner

This corner was originally established by the General Land Office in July, 1855. A. H. Runyon set a post and marked 2 oaks for bearing trees.

October 27, 1972. McCombs Knutson Associates (Dickman Knutson, county surveyor) searched for the corner half way between the east quarter corners of Section 7 and Section 6 along the north-south fence line. No occupation lines running east and west. Knutson found a rusty 1½ inch diameter iron pipe at approximately half way between the quarter corners. A rotted wood stake was found beside the iron pipe. Knutson replaced the iron pipe with a McLeod County cast iron monument and took reference ties.

June 4, 1991. We found the monument in good condition and took new reference ties.

The monument is accepted as marking the government corner. It perpetuates the position of an older monument, is along the old north-south fence line and falls near the mid-point between the quarter corners.

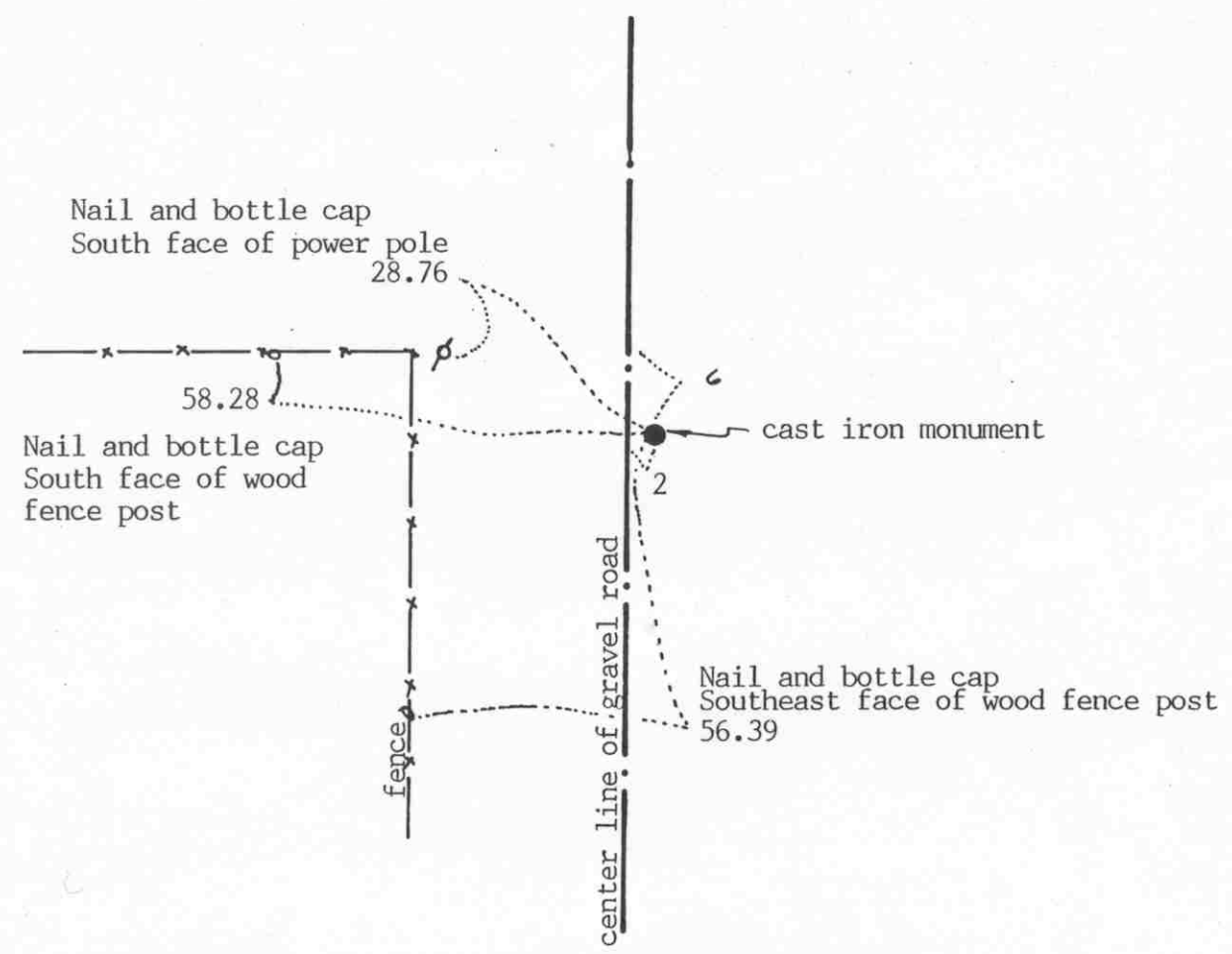
NORTH QUARTER corner, Section 7, Township 115 North, Range 28 West

Certificate of Location of Government Corner

SKETCH OF REFERENCE TIES

(NO SCALE)

SECTION 6



SECTION 7

Statement of evidence relative to this corner location on sheet 2

I hereby certify that this document was prepared by me or under my direct supervision.

Willard Pellinen

Willard Pellinen
McLeod County Surveyor
License No. 9626

Date Feb. 20, 1993

OFFICE OF THE COUNTY RECORDER
MCLEOD COUNTY, MINNESOTA.

I hereby certify that this document was filed in this office at 9 o'clock A.M. on the 4th day of March, 1993.

Carmen Helie Mulder, County Recorder

By _____, Deputy

Document No. 250777

Certificate of Location of Government Corner

July, 1855. This corner was originally established by A. H. Runyon of the General Land Office. He set a post, drove charred stake, raised mound with trench as per instructions and planted apples seeds at the southeast side of the mound.

May 11, 1972. Dickman Knutson, McLeod County surveyor, excavated for the corner, John Tupa from Hutchinson with a backhoe. Down $4\frac{1}{2}$ feet below the road surface, in the original ground, they found an angle iron. Mr John Drew, who had lived in the Southeast Quarter of Section 6 for about 25 years, said this was the quarter corner.

October 27, 1972. Knutson set a McLeod County cast iron monument and took additional reference ties.

June 4, 1991. We found the monument in good condition down 6 inches below the road surface and took new ties.

January 18, 1993. We found the monument ok and took new reference ties.

The monument set by Knutson is accepted as marking the correct location of the quarter corner. It perpetuates the position of an older monument, the angle iron,

NORTHEAST corner, Section 12, Township 115 North, Range 29 West

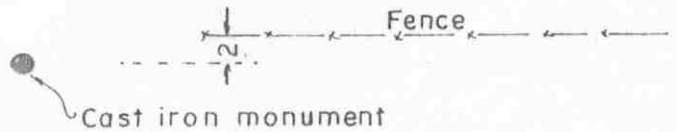
Certificate of Location of Government Corner

SKETCH OF REFERENCE TIES
(NO SCALE)



SECTION 1
T. 115, R. 29

SECTION 6
T. 115, R. 28



SECTION 12
T. 115, R. 29

SECTION 7
T. 115, R. 28

Statement of evidence relative to this corner location on sheet 2

I hereby certify that this document was prepared by me or under my direct supervision.

Willard Pellinen

Willard Pellinen
McLeod County Surveyor
License No. 9626

Date June 5, 1980

OFFICE OF THE COUNTY RECORDER
MCLEOD COUNTY, MINNESOTA.

I hereby certify that this document was filed in this office at 9 o'clock A. M. on the 23rd day of January, 19 96.

Carmen Ostlie Mulder County Recorder

By _____, Deputy

Document No. 270521

NORTHEAST corner, Section 12, Township 115 North, Range 29 West

Certificate of Location of Government Corner

1855. John Ryan of the General Land Office established this corner. He set a post and deposited charcoal, dug pits and trench and built mound of earth and planted osage orange seeds at the corners of the mound.

George Terlinden, in the Southwest Quarter of Section 6, Township 115, Range 28, said there was an axle at the corner. He said he built his south fence 2-4 feet north of the Section line.

November, 1970. Dickman Knutson, county surveyor, found an axle, down $1\frac{1}{2}$ feet below the surface of the ground. He replaced it with a McLeod County cast iron monument and took reference ties. This was about 2 feet south of an old fence line.

EAST QUARTER corner, Section 12, Township 115 North, Range 29 West

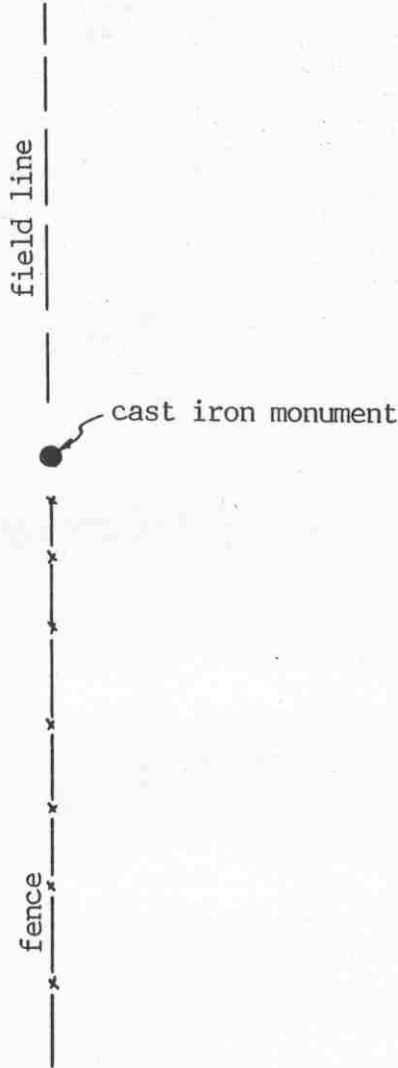
Certificate of Location of Government Corner

SKETCH OF REFERENCE TIES
(NO SCALE)



SECTION 12
T. 115
R. 29

SECTION 7,
T. 115
R. 28



2666.20 feet to southeast corner of Section 7

2867.17 feet to the center of Section 7

5513.53 feet to the east quarter corner of Sec. 7

Statement of evidence relative to this corner location on sheet 2

I hereby certify that this document was prepared by me or under my direct supervision.

Willard Pellinen

Willard Pellinen
McLeod County Surveyor
License No. 9626

Date Feb. 22, 1993

OFFICE OF THE COUNTY RECORDER
MCLEOD COUNTY, MINNESOTA.

I hereby certify that this document was filed in this office at 9 o'clock A.M. on the 4th day of March, 1993.

Carmen Estelle Mulder, County Recorder

By _____, Deputy

Document No. 250785

Certificate of Location of Government Corner

July, 1855. John Ryan of the General Land Office established this corner. He set a post, deposited charcoal, dug pits and trench, built mound and planted osage orange seeds at the corners of the mound.

November 6, 1970. Dickman Knutson, McLeod County Surveyor found a wood post with stones piled around it along the north-south fence line. Adjoining land owners agree this post is the quarter corner. Knutson set a McLeod County cast iron monument and took available reference ties.

January 18, 1993. We found the monument in good condition but no reference ties remaining. The monument is at the north end of a north-south fence. No available reference ties.

The monument set by Knutson is accepted as marking the location of the quarter corner.

EAST QUARTER corner, Section 8, Township 115 North, Range 28 West

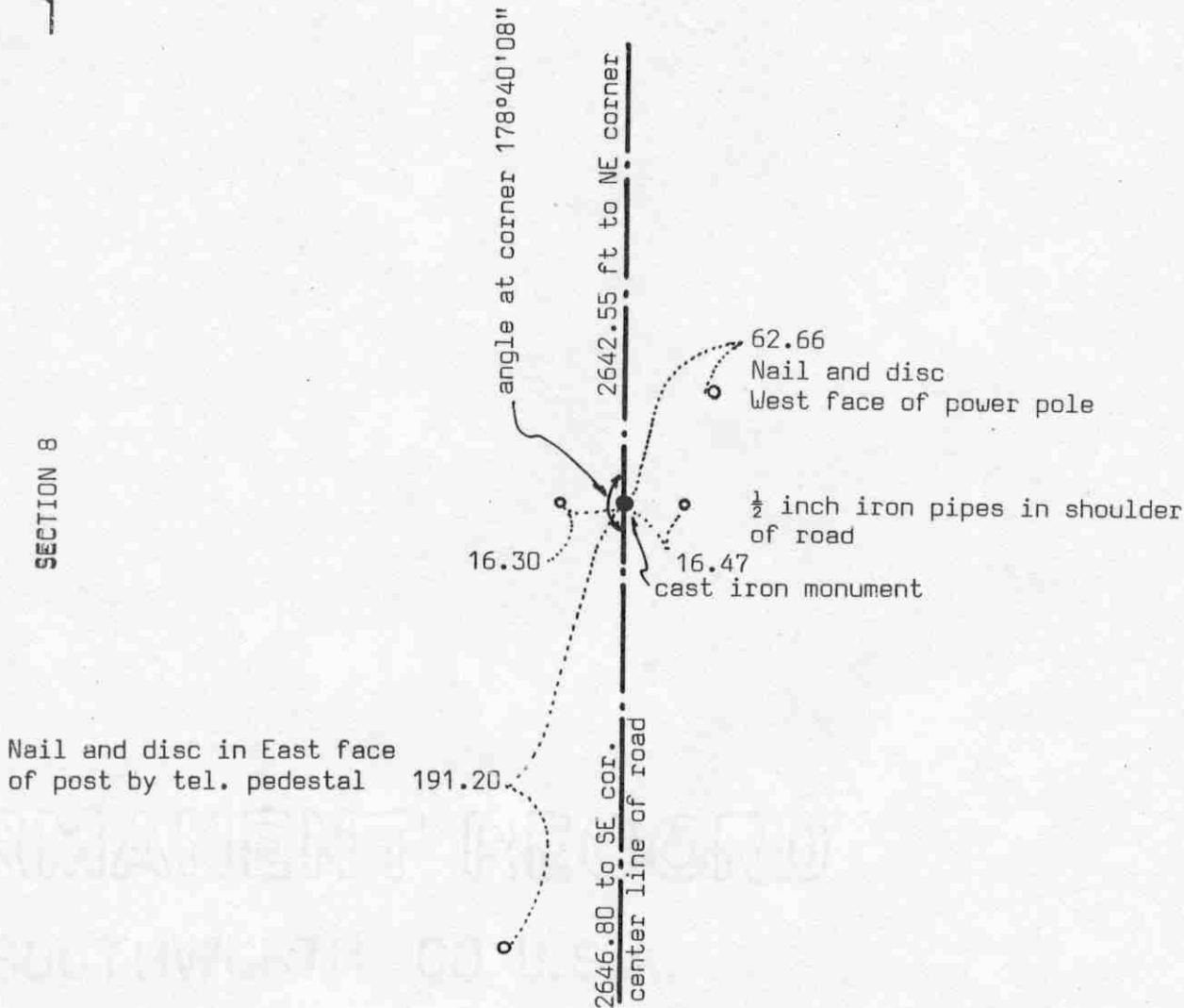
Certificate of Location of Government Corner

SKETCH OF REFERENCE TIES (NO SCALE)



SECTION 8

SECTION 9



Statement of evidence relative to this corner location on sheet 2

I hereby certify that this document was prepared by me or under my direct supervision.

Willard Pellinen

Willard Pellinen
McLeod County Surveyor
License No. 9626

Date July 8, 1990

OFFICE OF THE COUNTY RECORDER
MCLEOD COUNTY, MINNESOTA.

I hereby certify that this document was filed in this office at 9 o'clock A.M. on the 16th day of July, 1990.

Carmen Ottilie, County Recorder

By _____, Deputy

Document No. 234403

EAST QUARTER corner, Section 8, Township 115 North, Range 28 West

Certificate of Location of Government Corner

July, 1855. A.H.Runyon of the General Land Office originally set this corner. He "set quarter section post, drove charred stake, raised mound with trench as per instructions and planted apple seeds SE."

February 4, 1972. McCombs Knuson Associates (Dickman Knutson, county surveyor) measured the east line of section 9 and set a temporary east quarter corner in the center line of the gravel road in line with a fence to the east.

May 11, 1972. Knutson dug for the corner (John Tupa from Hutchinson with a backhoe). Down $2\frac{1}{2}$ feet below the road surface they found 6 inch by 6 inch by 15 inch stone, set on end. Below the stone they found a rotted wood stake. They took reference ties.

October 15, 1973. Knutson set a McLeod County cast iron monument at the corner.

May 12, 1989. We found all the reference ties destroyed, dug down 4 inches and found the monument in good condition. We took ne reference ties.

The location of this corner has been perpetuated by the stone and wood stake and later by the cast iron monument set by Knutson.

NORTHEAST corner, Section 8, Township 115 North, Range 28 West

Certificate of Location of Government Corner

SKETCH OF REFERENCE TIES

(NO SCALE)

SECTION 5

SECTION 4

Center line of bituminous road (State Highway No. 22)

Punch hole on top of west end of 18 inch CMP
136.84

Nail and bottle cap West face of power pole
86.97

cast iron monument

50.85

24.96
Nail and bottle cap North face of power pole

Nail and bottle cap North face of 8 inch tree, Up 2 feet

center line of gravel road

SECTION 8

SECTION 9

Statement of evidence relative to this corner location on sheet 2

I hereby certify that this document was prepared by me or under my direct supervision.

Willard Pellinen
Willard Pellinen
McLeod County Surveyor
License No. 9626

Date Nov. 12, 1992

OFFICE OF THE COUNTY RECORDER
MCLEOD COUNTY, MINNESOTA.

I hereby certify that this document was filed in this office at 3 o'clock P.M. on the 17th day of November, 1992.

Carmen Estelle Mulder, County Recorder

By _____, Deputy

Document No. 248896

Certificate of Location of Government Corner

July, 1855. A. H. Runyon of the General Land Office originally established this corner. He set a post and marked 3 aspens and an oak for bearing trees.

May 11, 1972. McCombs Knutson Associates (Dickman Knutson, county surveyor) dug for the corner, John Tupa from Hutchinson with a backhoe. They found no evidence of the government corner.

August 30, 1972. Knutson set a cast iron monument using information from State Highway No. 22 right of way map. Knutson found center line P.I. Station 1381+24.9, and set a point on P.O.S.T 415.6 feet ahead of the P.I., turned an angle of 72 degrees 03 minutes and set the monument 163.5 feet south as per the right of way map.

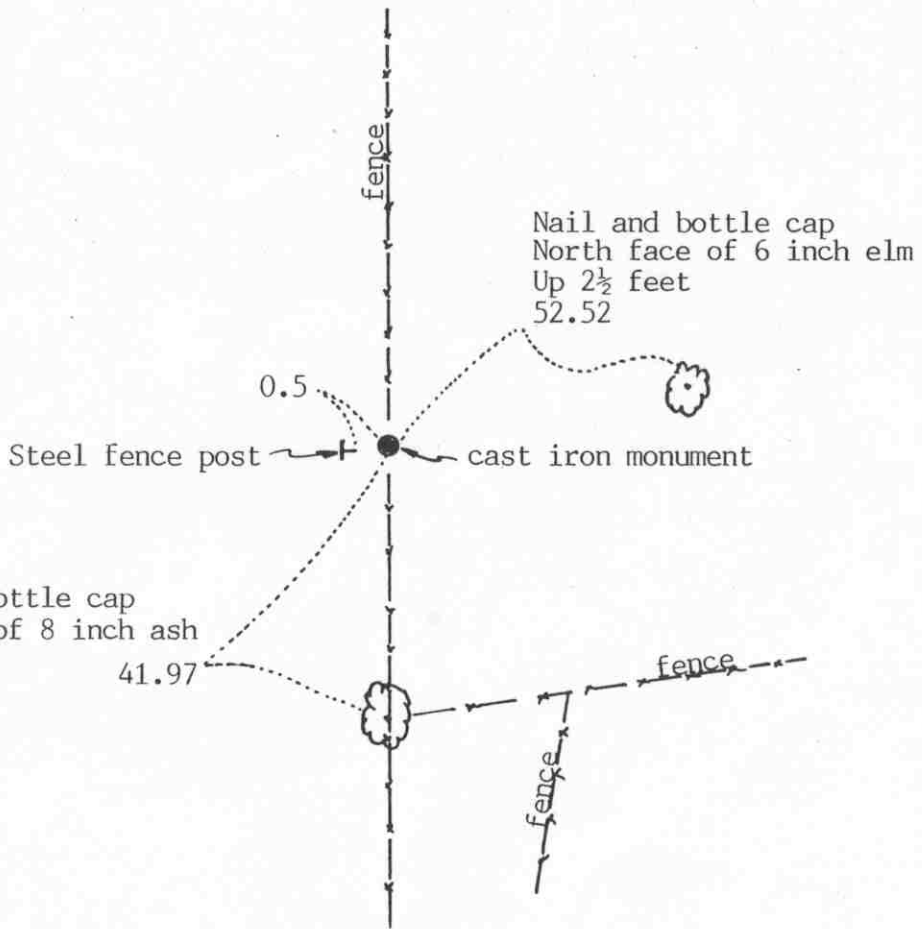
November 12, 1992. We found the monument in good condition down 4 inches below the road surface and we took new reference ties.

NORTH QUARTER corner, Section 8, Township 115 North, Range 28 West

Certificate of Location of Government Corner

SKETCH OF REFERENCE TIES
(NO SCALE)

SECTION 5



SECTION 8

Statement of evidence relative to this corner location on sheet 2

I hereby certify that this document was prepared by me or under my direct supervision.

Willard Pellinen

Willard Pellinen
McLeod County Surveyor
License No. 9626

Date Nov. 14, 1992

OFFICE OF THE COUNTY RECORDER
MCLEOD COUNTY, MINNESOTA.

I hereby certify that this document was filed in this office at 9 o'clock A.M. on the 20th day of November, 19 92.

Carmen Estelle Mulder, County Recorder

By _____, Deputy

Document No. 248984

NORTH QUARTER corner, Section 8, Township 115 North, Range 28 West

Certificate of Location of Government Corner

July, 1855. This corner was originally established by the General Land Office. A.H.Runyon set a post, in a marsh, and he drove a charred stake, raised mound with trench as per instructions and planted apple seeds at the southeast corner of the mound.

1939 survey shows a distance of 2663 feet to the north-east corner of Section 8.

December 13, 1972. McCombs Knutson Associates found an iron pipe along the north-south fence on a straight line between the section corners. This was approximately the same distance from the northeast corner as in 1939.

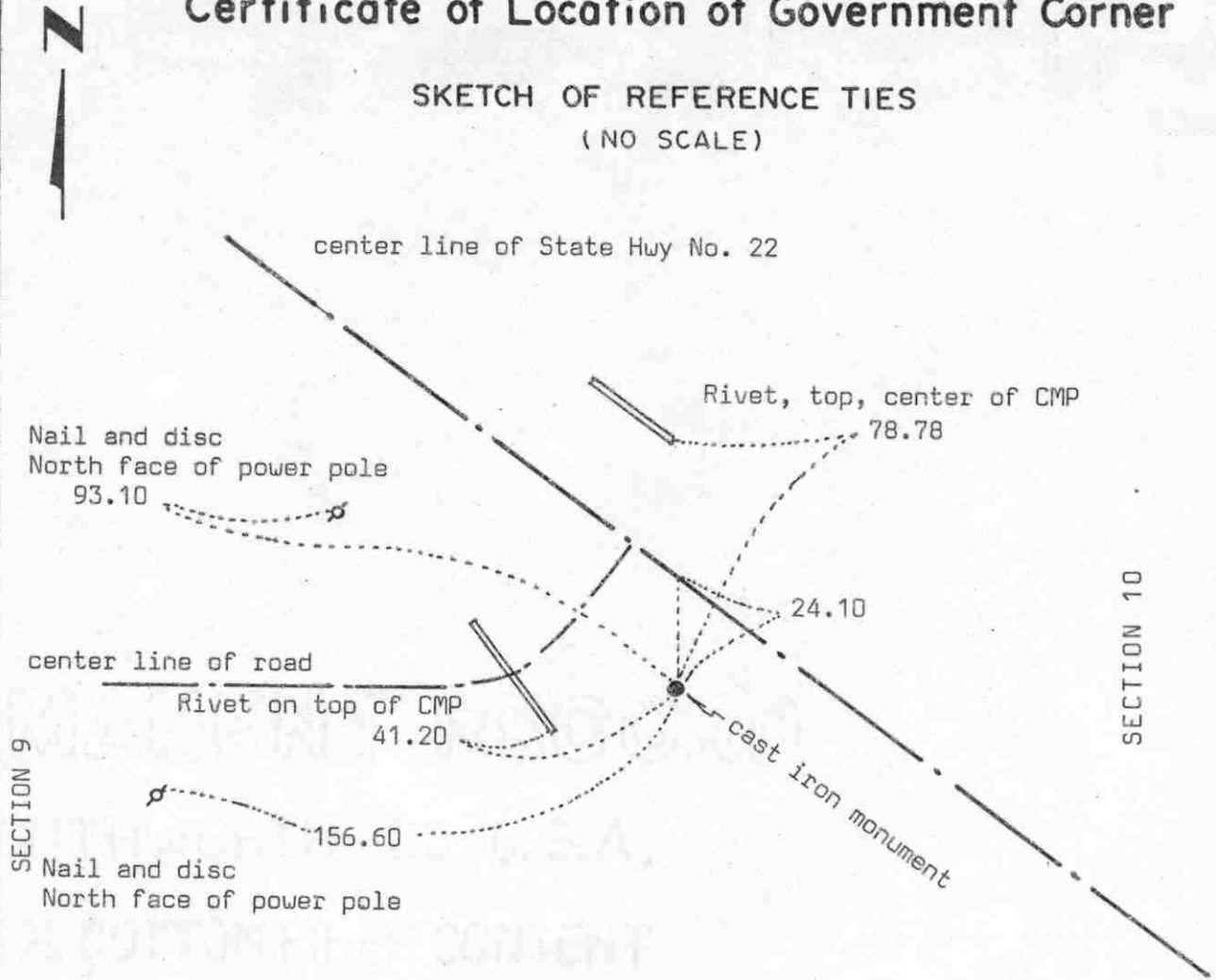
November 28, 1974. Knutson set a McLeod County cast iron monument in place of the iron pin and took reference ties. They found the corner to be on a straight line between the section corners.

November 12, 1992. No old ties remaining. We found the monument flush with the ground under the north-south fence. We took new available ties.

The monument set by Knutson is accepted as the location of the quarter corner. It fits a long standing occupation line, the north-south fence, and it perpetuates the location of an older monument.

Certificate of Location of Government Corner

SKETCH OF REFERENCE TIES (NO SCALE)



Statement of evidence relative to this corner location on sheet 2

I hereby certify that this document was prepared by me or under my direct supervision.

Willard Pellinen

Willard Pellinen
McLeod County Surveyor
License No. 9626

Date July 1, 1990

OFFICE OF THE COUNTY RECORDER
MCLEOD COUNTY, MINNESOTA.

I hereby certify that this document was filed in this office at 9 o'clock A.M. on the 9th day of July, 1990.

Carmen Osellie, County Recorder

By _____, Deputy

Document No. 234301

Certificate of Location of Government Corner

1855. A.H.Runyon of the General Land Office established this corner. He "set quarter section post, drove charred stake, raised mound with trench as per instructions and planted apple seeds SE."

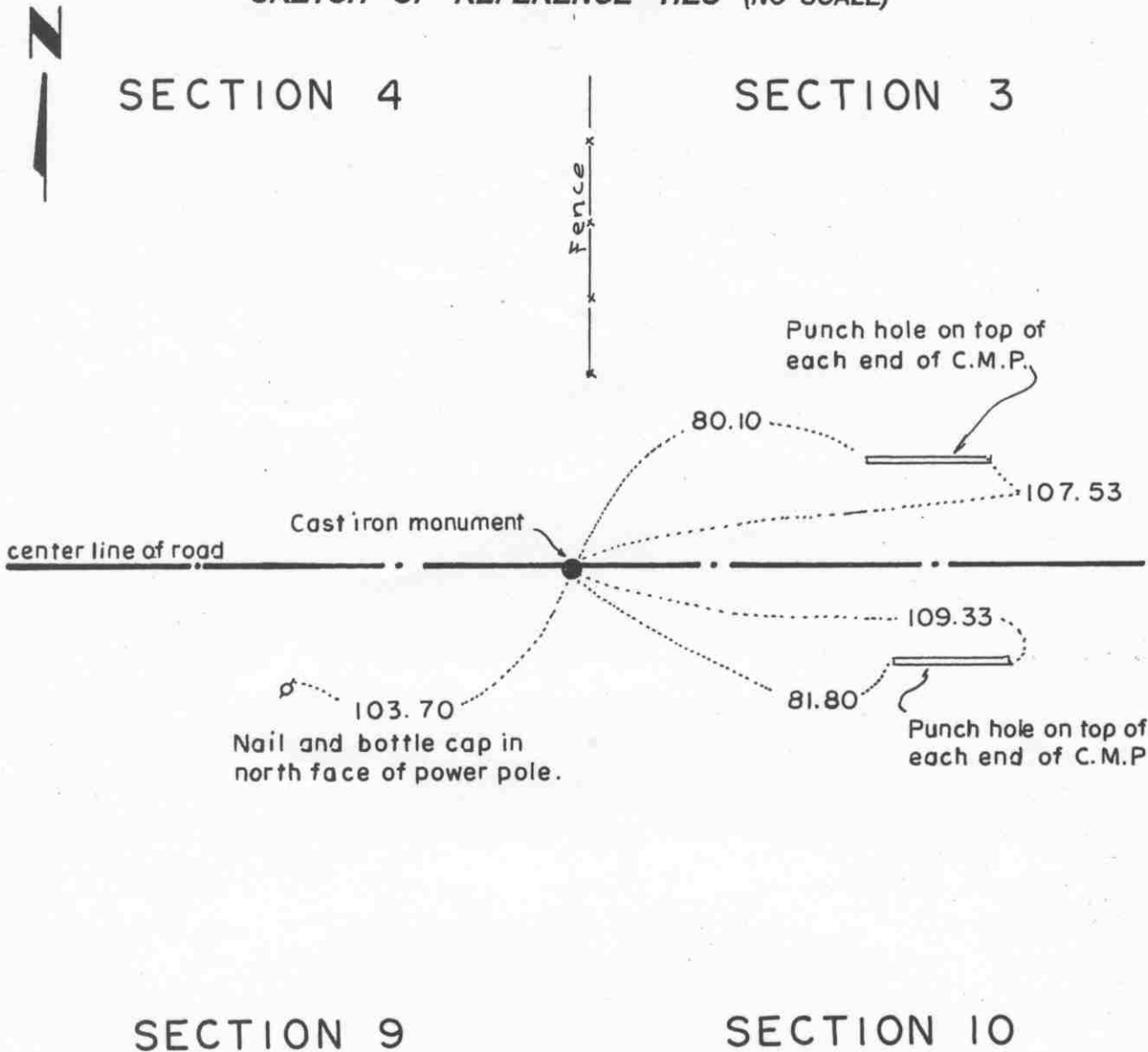
August 30, 1972. Dickman Knutson, county surveyor, set a cast iron monument at the corner using information from State Highway No. 22 right of way map.

May 8, 1989. We found the cast iron monument in good condition and the reference ties good.

Certificate of Location of Government Corner

Northeast corner, Section 9, Township 115 North, Range 28 West

SKETCH OF REFERENCE TIES (NO SCALE)



Statement of evidence relative to this corner location on sheet 2

I hereby certify that this document was prepared by me or under my direct supervision.

Willard Pellinen

Willard Pellinen
McLeod County Surveyor
License No. 9626.

Date Feb. 3, 1995.

OFFICE OF THE COUNTY RECORDER MCLEOD COUNTY, MINNESOTA

I hereby certify that this document was filed in this office at 9 o'clock A.M. on the 6th day of February, 19 95.

Carmen Ottilie Mulder County Recorder

By _____, Deputy.

Document No. 264005

Certificate of Location of Government Corner
Northeast Corner, Section 9, Township 115 North, Range 28 West

July, 1855. A. H. Runyon of the General Land Office established this corner. He set a post, and marked a 5 inch aspen, an 8 inch aspen, a 6 inch aspen and a 9 inch aspen for bearing trees.

1971. Adjoining land owners agree the center line of the east-west road in line with a fence to the north is the section corner.

November 3, 1971. Dickman Knutson, county surveyor, excavated for the corner (John Tupa from Hurchinson with a backhoe). They found a 1/2 inch diameter iron pipe, 2 spikes below the pipe and a small, 5 inch diameter stone, down 4 feet below the road surface. At many of the corners in this area, small oval stones were found. Knutson took reference ties to the found iron pipe and stone. Same location.

1972. Knutson set a McLeod County cast iron monument.

February 27, 1973. Knutson took new ties. Old ties had been destroyed by road construction. Monument still in place.

January 13, 1995. We checked the reference ties to the monument.

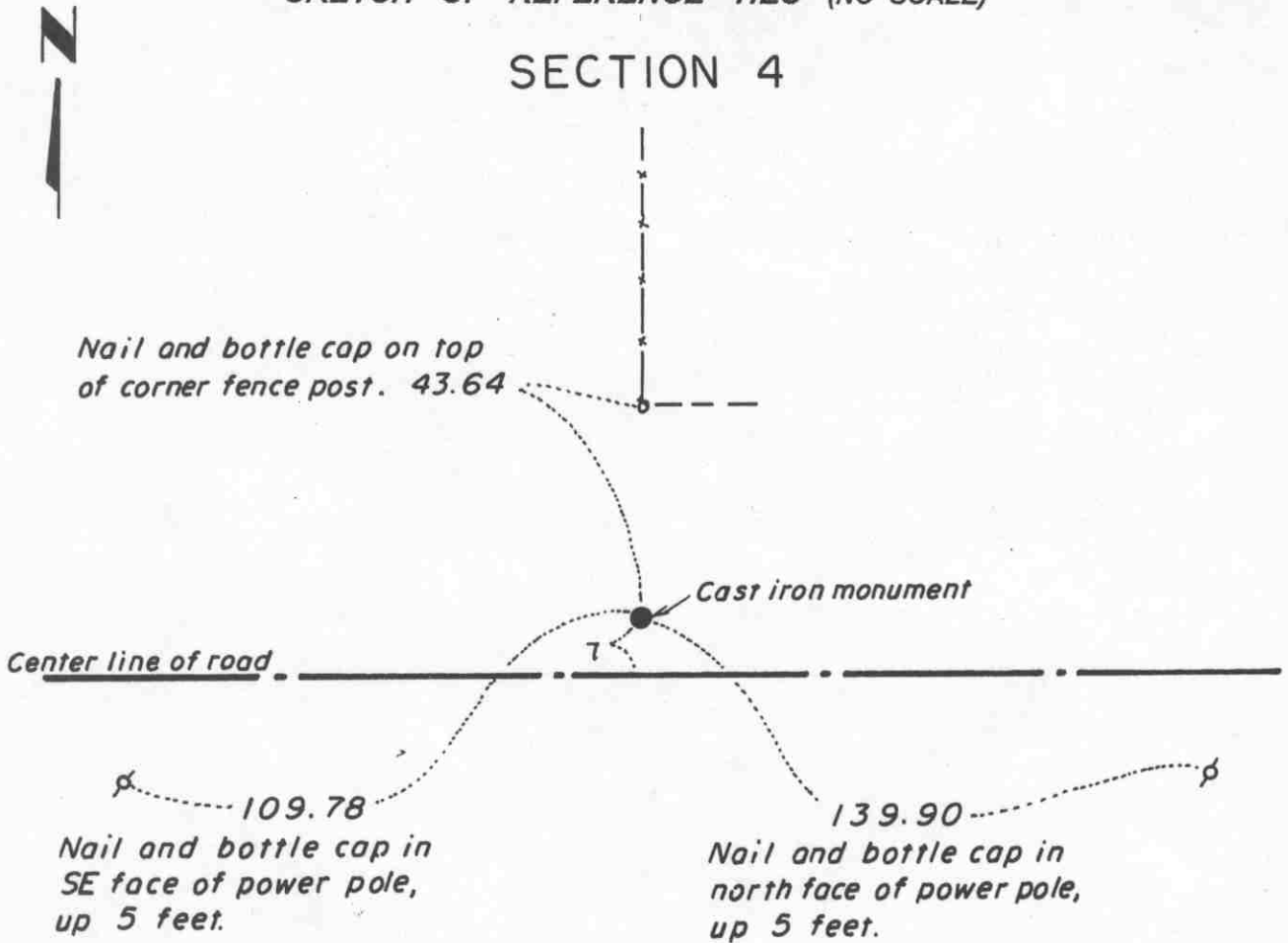
The monument set by Knutson is accepted as marking the correct location of the government corner. It fits long standing occupation lines (the road and the fence) and it perpetuates the location of older monuments (the iron pipe and the stone)

Certificate of Location of Government Corner

North Quarter corner, Section 9, Township 115 North, Range 28 West

SKETCH OF REFERENCE TIES (NO SCALE)

SECTION 4



SECTION 9

Statement of evidence relative to this corner location on sheet 2

I hereby certify that this document was prepared by me or under my direct supervision.

Willard Pellinen
Willard Pellinen
McLeod County Surveyor
License No. 9626.

Date Feb. 6, 1995.

OFFICE OF THE COUNTY RECORDER
MCLEOD COUNTY, MINNESOTA

I hereby certify that this document was filed in this office at 9 o'clock A M. on the 6th day of February, 19 95.

Carmen Helie Mulder, County Recorder

By _____, Deputy.

Document No. 264006

Certificate of Location of Government Corner
North Quarter Corner, Section 9, Township 115 North, Range 28 West

July, 1855. A. H. Runyon of the General Land Office established this corner. He set a post and marked a 6 inch aspen and a 7 inch aspen for bearing trees.

1972. Old county highway department field notes show the corner to be on the north side of the road.

May 11, 1972. Dickman Knutson, county surveyor, excavated for the corner (John Tupa from Hutchinson with a backhoe). They found a 3/4 inch diameter iron pipe approximately 8 feet north of the center line of the road. They took reference ties to the iron pipe.

February 1, 1973. Knutson used reference ties to reset the corner. Road was upgraded in the summer of 1972. Knutson set a 1/2 inch diameter iron pipe.

October 18, 1973. Knutson replaced the iron pipe with a McLeod County cast iron monument.

July 21, 1983. We found the monument down a foot below the surface of the road and took new reference ties. We set a new cast iron monument over the old monument, flush with the surface of the bituminous road.

January 25, 1995. We checked the reference ties.

Certificate of Location of Government Corner

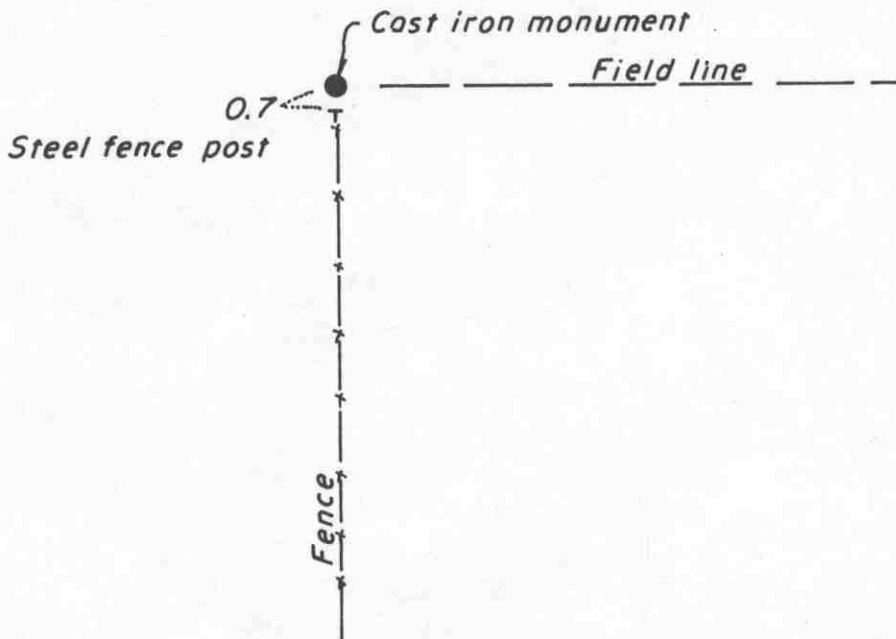
East Quarter corner, Section 10, Township 115 North, Range 28 West

SKETCH OF REFERENCE TIES (NO SCALE)



SECTION 10

SECTION 11



Statement of evidence relative to this corner location on sheet 2

I hereby certify that this document was prepared by me or under my direct supervision.

Willard Pellinen
Willard Pellinen
McLeod County Surveyor
License No. 9626.

Date April 20, 1995

OFFICE OF THE COUNTY RECORDER
MCLEOD COUNTY, MINNESOTA

I hereby certify that this document was filed in this office at 9 o'clock A M. on the 24th day of Apr 19 95.

Carmen Dottie Mulder, County Recorder

By _____, Deputy.

Document No. 265314

Certificate of Location of Government Corner

East Quarter Corner, Section 10, Township 115 North, Range 28 West

July, 1855. A. H. Runyon of the General Land Office established this corner. He set a post, drove a charred stake, raised mound with trench and planted apple seeds at the southeast corner of the mound.

April 26, 1971. Dickman Knutson, county surveyor, found a stone with a drill hole on top at the intersection of a fence running south and field line to the east. This location has been accepted as the quarter corner by adjoining land owners.

August 13, 1971. Knutson replaced the stone with a McLeod County cast iron monument.

January, 1995. The monument set by Knutson is accepted as marking the location to the government corner. It fits long standing occupation lines and it perpetuates the location of an older monument.

February 1, 1995. We found the monument in good condition 0.7 foot north of a steel fence post.

Certificate of Location of Government Corner
Northeast Corner, Section 10, Township 115 North, Range 28 West

July, 1855. A. H. Runyon of the General Land Office established this corner. He set a post, drove a charred stake, raised mound with trench and planted apple seeds at the southeast corner of the mound.

May 11, 1972. Dickman Knutson, county surveyor, excavated for the corner. (John Tupa from Hutchinson with a backhoe) Down 4 1/2 feet below the surface of the road they found a stone, 12 inches square, with rounded corners, 12 inches high. They took reference ties and left the stone in place.

December 14, 1972. Knutson set a spike at the corner and took additional ties.

June 25, 1974. Knutson set a McLeod County cast iron monument at the corner.

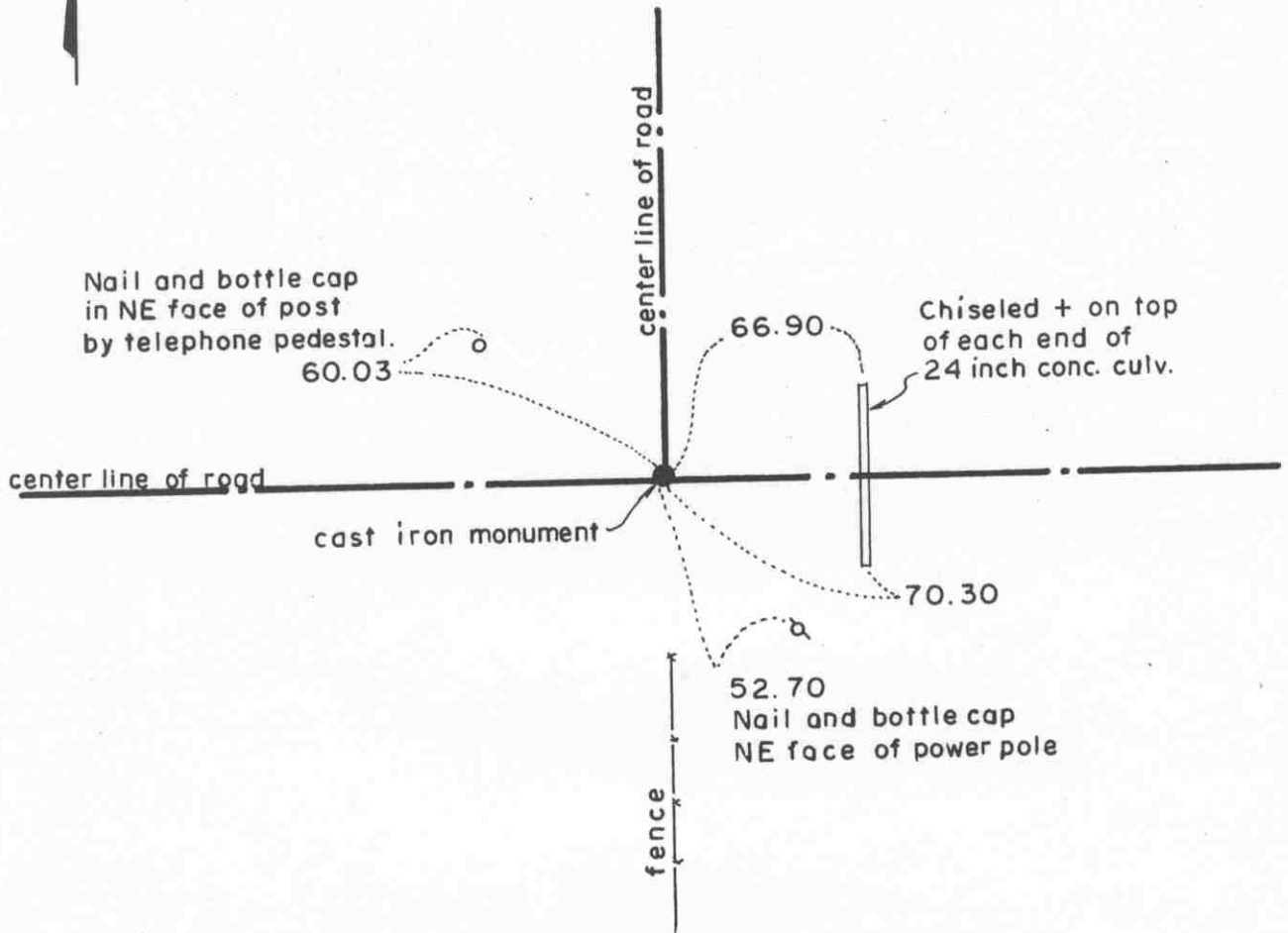
January 13, 1995. We checked the reference ties to the monument.

Certificate of Location of Government Corner

North Quarter corner, Section 10, Township 115 North, Range 28 West

SKETCH OF REFERENCE TIES (NO SCALE)

SECTION 3



SECTION 10

Statement of evidence relative to this corner location on sheet 2

I hereby certify that this document was prepared by me or under my direct supervision.

Willard Pellinen
Willard Pellinen
McLeod County Surveyor
License No. 9626.

Date Feb. 3, 1995

OFFICE OF THE COUNTY RECORDER
MCLEOD COUNTY, MINNESOTA

I hereby certify that this document was filed in this office at 9 o'clock A. M. on the 6th day of February, 19 95.

Carmen Patricia Mulder County Recorder

By _____, Deputy.

Document No. 264008

Certificate of Location of Government Corner
North Quarter Corner, Section 10, Township 115 North, Range 28 West

July, 1855. A. H. Runyon of the General Land Office originally established this corner. He set a post, drove a charred stake, raised mound with trench and pits, and planted apple seeds at the southeast corner of the mound.

1971. Dickman Knutson, county surveyor, dug for the corner and found a 3/4 inch iron pipe at the center line intersection of the roads. Roads north, east and west and a fence to the south. This location has been accepted by adjoining land owners as the quarter corner. Knutson set a McLeod County cast iron monument and took available reference ties.

December 12, 1972. Road had been graded and monument replaced so Knutson took new ties.

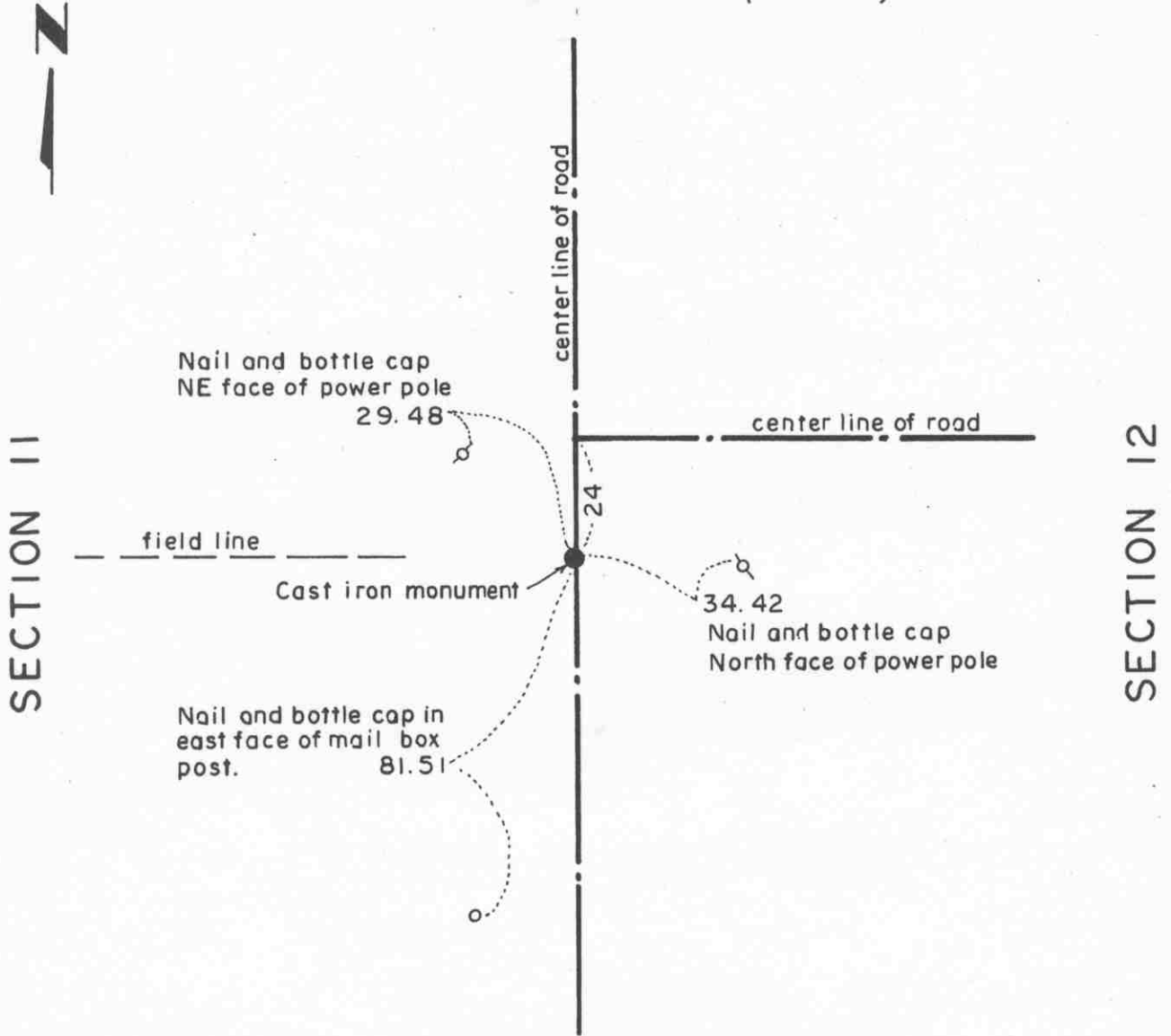
January 13, 1995. We found no old ties remaining. We found the monument in good condition down 15 inches below the surface of the road and took new ties.

The monument set by Knutson is accepted as marking the location of the government corner. It fits long standing occupation lines (the roads and the fence) and it perpetuates the location of an older monument.

Certificate of Location of Government Corner

East Quarter corner, Section 11, Township 115 North, Range 28 West

SKETCH OF REFERENCE TIES (NO SCALE)



Statement of evidence relative to this corner location on sheet 2

I hereby certify that this document was prepared by me or under my direct supervision.

Willard Pellinen
Willard Pellinen
McLeod County Surveyor
License No. 9626.

Date Feb. 3, 1995

**OFFICE OF THE COUNTY RECORDER
MCLEOD COUNTY, MINNESOTA**

I hereby certify that this document was filed in this office at 9 o'clock A.M. on the 6th day of February, 19 95.

Carmen Ottilie Mulder County Recorder

By _____, Deputy.

Document No. 264009

Certificate of Location of Government Corner

East Quarter Corner, Section 11, Township 115 North, Range 28 West

July, 1855. A. H. Runyon of the General Land Office originally established this corner. He set a post, drove a charred stake, raised mound with trench and pits, and planted apple seeds at the southeast corner of the mound.

1971. Dickman Knutson, county surveyor, found a 1/2 inch iron pipe set by Delbert Rieke, surveyor. Rieke set the iron pipe at the location where he found an old monument.

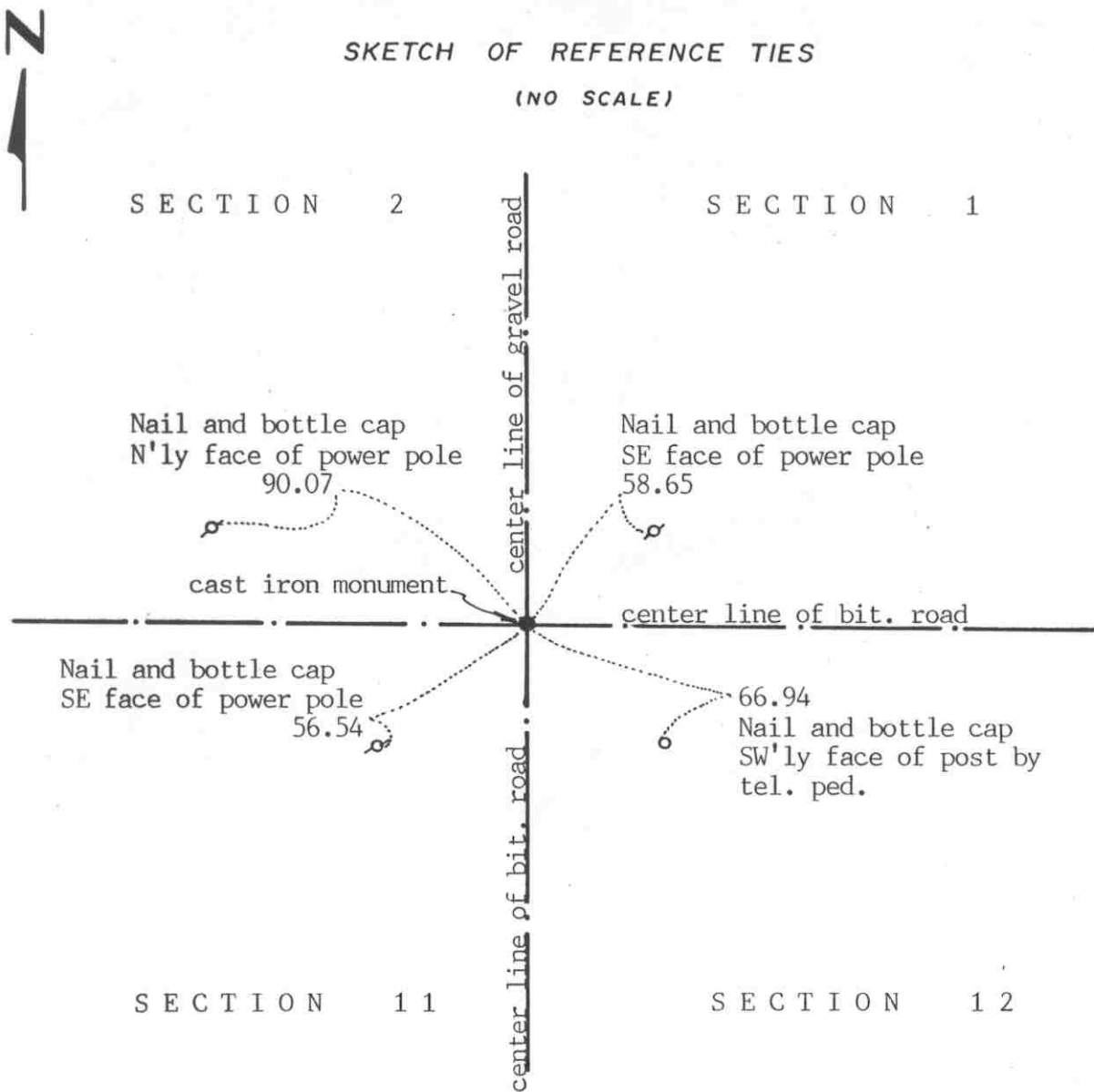
August, 1971. Knutson replaced the found iron pipe with a McLeod County cast iron monument and took available reference ties.

February 19, 1985. We found the monument in good condition down 4 inches below the surface of the road and took new ties.

January 13, 1995. We checked the reference ties to the monument.

Certificate of Location of Government Corner

SKETCH OF REFERENCE TIES
(NO SCALE)



Statement of evidence relative to this corner location on sheet 2

I hereby certify that this document was prepared by me or under my direct supervision.

Willard Pellinen
Willard Pellinen
McLeod County Surveyor
License No. 9626
Date Sept. 3, 1991

OFFICE OF THE COUNTY RECORDER
MCLEOD COUNTY, MINNESOTA.

I hereby certify that this document was filed in this office at 1:30 o'clock P.M. on the 3rd day of Oct, 1991.

Carmen Ostlie, County Recorder
By _____, Deputy

Document No. 241303

NORTHEAST corner, Section 11, Township 115 North, Range 28 West

Certificate of Location of Government Corner

July, 1855. A.H.Ryan of the General Land Office "drove charred stake, raised mound with trench as per instructions" and he planted apple seeds at the southeast corner of the mound.

May, 1971. McCombs Knutson Associates (Dickman Knutson, county surveyor) excavated for the corner, John Tupa from Hutchinson with a backhoe. Down $2\frac{1}{2}$ feet below the road surface they found a 4 inch by 5 inch stone, sharp point up. They took reference ties.

August 13, 1971. Knutson set a McLeod County cast iron monument and took additional ties.

August 8, 1979. We found the monument in good condition and took new ties. All old ties had been destroyed.

February 19, 1985. All old ties destroyed. We took new available reference ties.

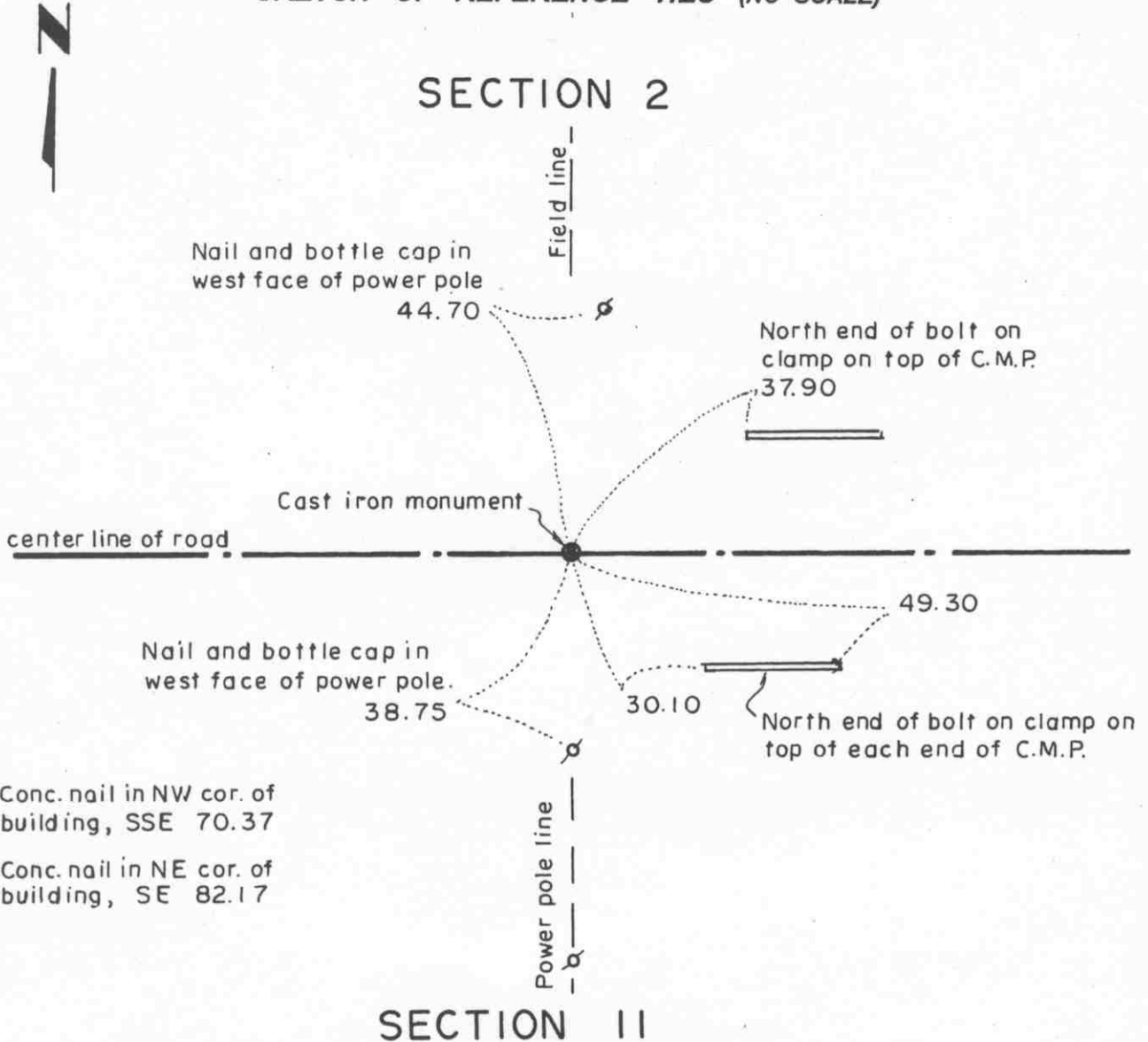
June 21, 1990. We found the monument in good condition and checked the reference ties.

We accept the stone found by Knutson as having perpetuated the correct location of the section corner. This is on the center line intersection of the roads.

Certificate of Location of Government Corner

North Quarter corner, Section 11, Township 115 North, Range 28 West

SKETCH OF REFERENCE TIES (NO SCALE)



Statement of evidence relative to this corner location on sheet 2

I hereby certify that this document was prepared by me or under my direct supervision.

Willard Pellinen
Willard Pellinen
McLeod County Surveyor
License No. 9626.

Date Feb. 3, 1995

OFFICE OF THE COUNTY RECORDER MCLEOD COUNTY, MINNESOTA

I hereby certify that this document was filed in this office at 9 o'clock A. M. on the 6th day of February, 19 95.

Carmen Obilie Mulder County Recorder

By _____, Deputy.

Document No. 264010

Certificate of Location of Government Corner

North Quarter Corner, Section 11, Township 115 North, Range 28 West

July, 1855. A. H. Runyon of the General Land Office established this corner. He set a post, drove charred stake, raised mound with trench and planted apple seeds at the southeast corner of the mound.

1971. Adjoining land owners agree the center line of the east-west road in line with a fence to the north is the quarter corner.

May, 1971. Dickman Knutson, county surveyor, excavated for the corner (John Tupa from Hutchinson with a backhoe). Down 1 1/2 feet below the surface of the road they found a 2 foot long re-rod. 2 feet below the re-rod they found a small, 5 inch diameter, stone. In this area, a small stone was found at many of the corners. They took reference ties to the re-rod and stone, both in same location.

1971. Knutson set a McLeod County cast iron monument.

November 11, 1981. We retied the corner, Road had been graded and the old ties destroyed. Monument still in place.

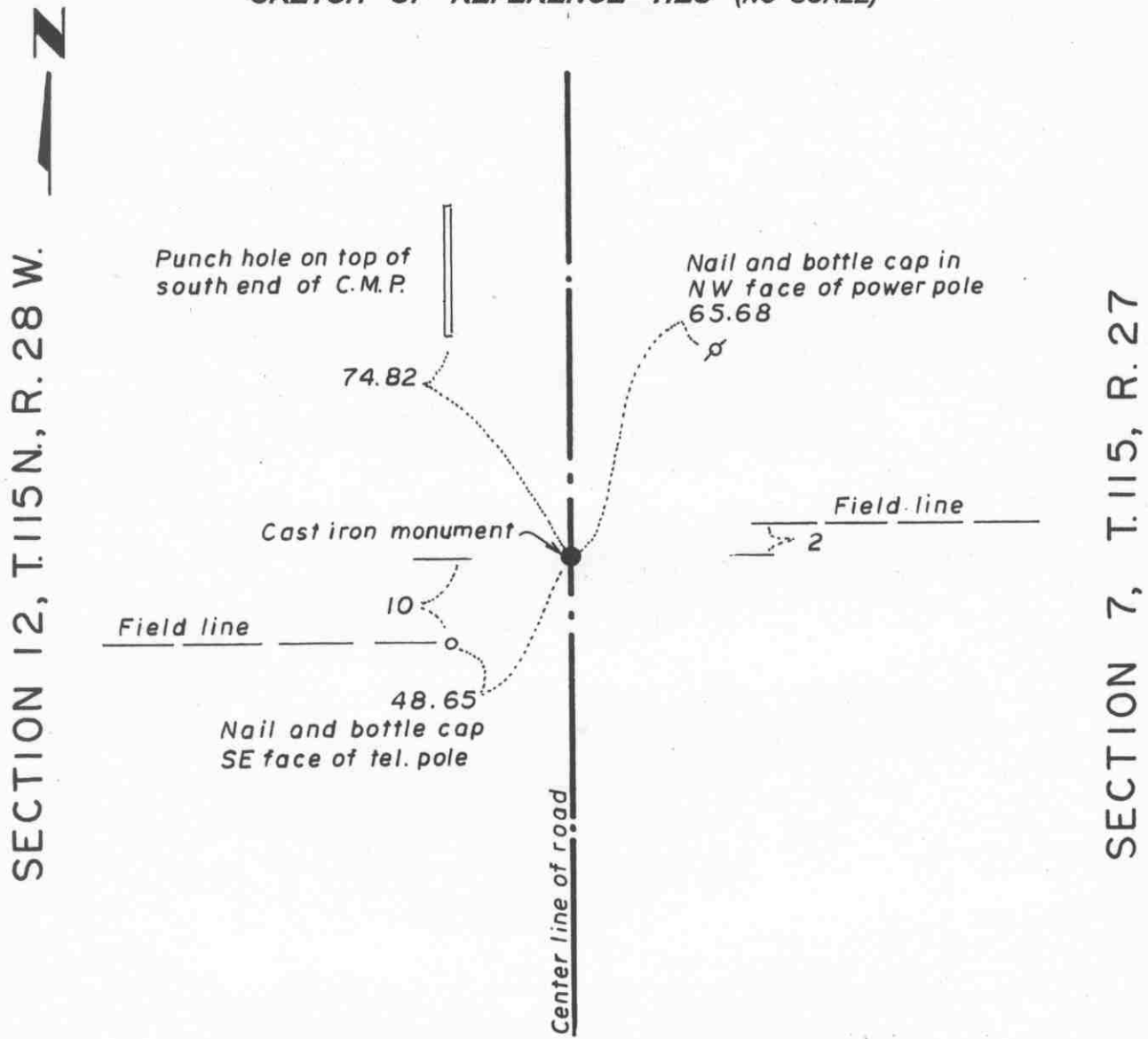
January 13, 1995. We checked the reference ties.

The monument set by Knutson is accepted as marking the correct location of the government corner. It fits long standing occupation lines and it perpetuates the location of older monuments.

Certificate of Location of Government Corner

East Quarter corner, Section 12, Township 115 North, Range 28 West

SKETCH OF REFERENCE TIES (NO SCALE)



Statement of evidence relative to this corner location on sheet 2

I hereby certify that this document was prepared by me or under my direct supervision.

Willard Pellinen
 Willard Pellinen
 McLeod County Surveyor
 License No. 9626.

Date Feb. 3, 1995.

**OFFICE OF THE COUNTY RECORDER
 MCLEOD COUNTY, MINNESOTA**

I hereby certify that this document was filed in this office at 9 o'clock A M. on the 6th day of February 19 95.

(Carman) Obelia Mudden, County Recorder

By _____, Deputy.

Document No. 264011

Certificate of Location of Government Corner
East Quarter Corner, Section 12, Township 115 North, Range 28 West

1855. John Ryan of the General Land Office established this corner. He set a post, deposited charcoal, dug pits and trench, built mound and planted osage orange seeds at the corners of the mound.

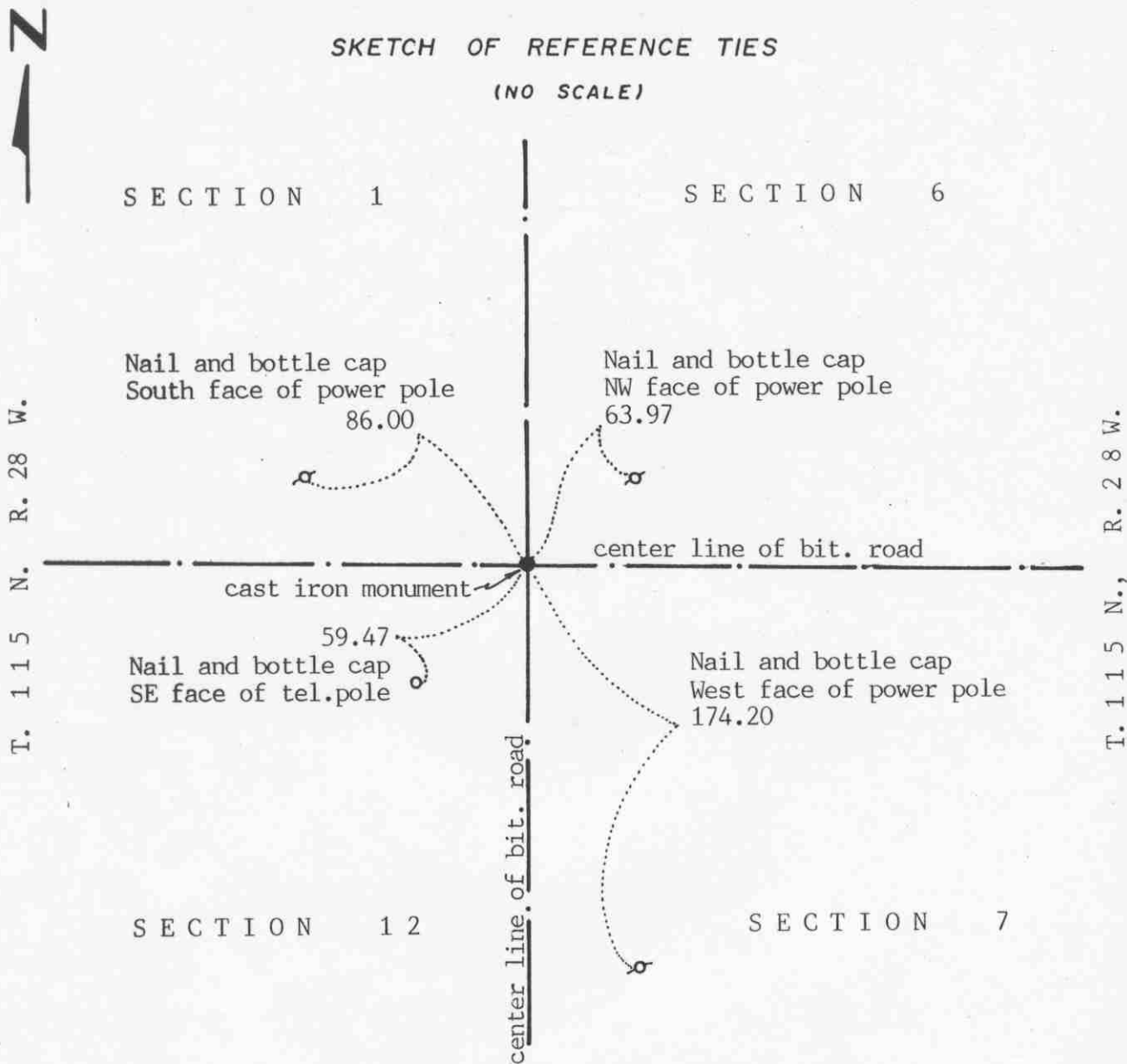
December, 1968. Dickman Knutson, county surveyor, found a 1 inch diameter iron pin at the corner and replaced it with a McLeod County cast iron monument.

January 13, 1995. We found the monument in good condition down 6 inches below the surface of the road and took new reference ties.

Certificate of Location of Government Corner

SKETCH OF REFERENCE TIES

(NO SCALE)



Statement of evidence relative to this corner location on sheet 2

I hereby certify that this document was prepared by me or under my direct supervision.

Willard Pellinen
 Willard Pellinen
 McLeod County Surveyor
 License No. 9626

Date Sept. 3, 1991

OFFICE OF THE COUNTY RECORDER
 MCLEOD COUNTY, MINNESOTA.

I hereby certify that this document was filed in this office at 1:30 o'clock P.M. on the 3rd day of Oct, 1991.

Carmen Ostlie, County Recorder

By _____, Deputy

Document No. 241304

Certificate of Location of Government Corner

1855. John Ryan of the General Land Office set a post, deposited charcoal, dug pits and trench, built mound and planted osage orange seeds at the corners of the mound.

1969. McCombs Knutson Associates (Dickman Knutson, county surveyor) dug for the corner and found nothing. Knutson set a McLeod County cast iron monument on the center line intersection of the roads. Adjoining property owners say this is the correct location.

July 28, 1987. We found the monument in good condition 5 inches below the road surface. We took new reference ties.

June 21, 1990. We found the monument in good condition and checked the reference ties.

There being no evidence to the contrary, we accept the monument set by Knutson as marking the correct position of the section corner. It fits occupation lines, the center lines of the roads and it is within 0.3 of a foot of being the same distance from the north quarter corner of Section 7 as E.L. Higgins measured in 1899.

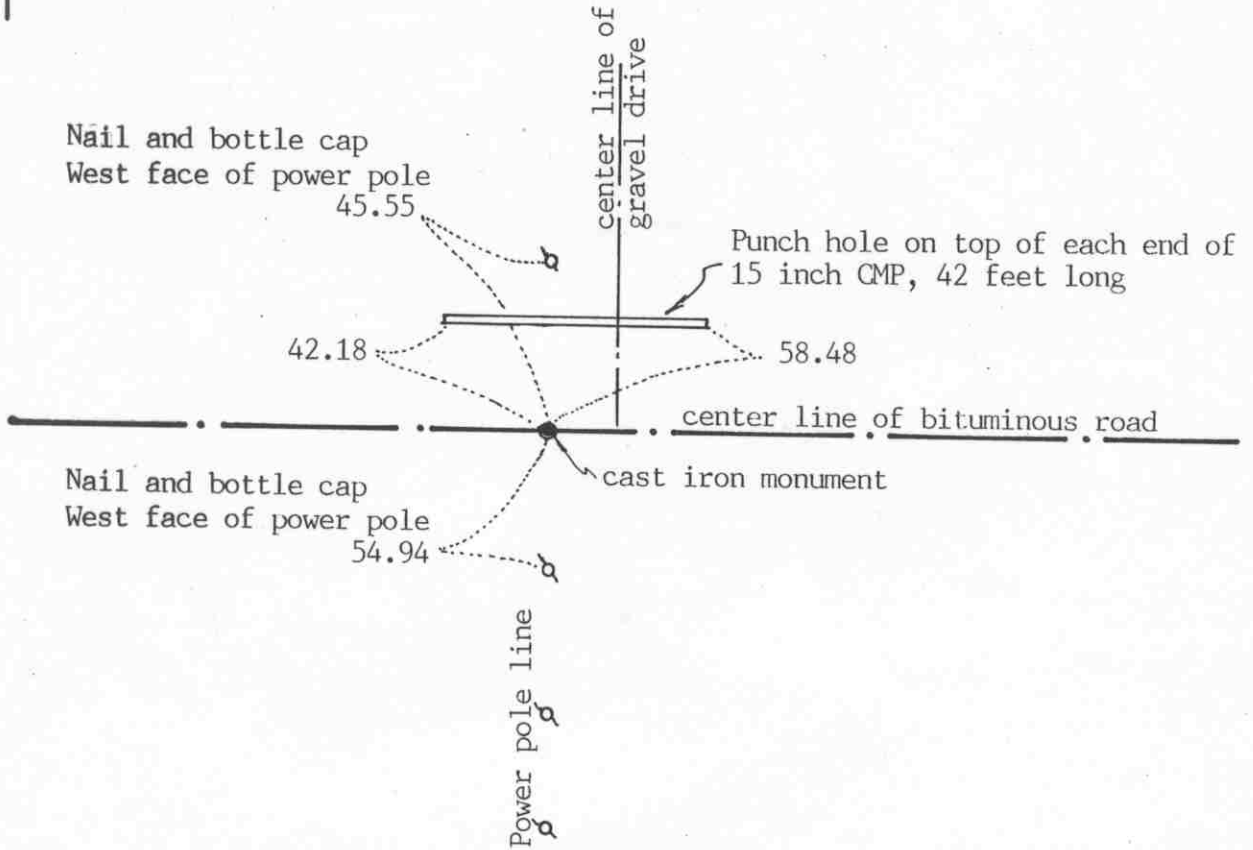
Certificate of Location of Government Corner



SKETCH OF REFERENCE TIES

(NO SCALE)

SECTION 1



SECTION 12

Statement of evidence relative to this corner location on sheet 2

I hereby certify that this document was prepared by me or under my direct supervision.

Willard Pellinen

Willard Pellinen
McLeod County Surveyor
License No. 9626

Date Oct. 3, 1991

OFFICE OF THE COUNTY RECORDER
MCLEOD COUNTY, MINNESOTA.

I hereby certify that this document was filed in this office at 1 o'clock P.M. on the 21st day of Oct, 1991.

Carmen Ostlie, County Recorder

By _____, Deputy

Document No. 241587

NORTH QUARTER corner, Section 11, Township 115 North, Range 28 West

Certificate of Location of Government Corner

July, 1855. This corner was originally set by A.H.Runyon. He "set quarter section post, drove charred stake, raised mound with trench as per instructions." He planted apple seeds at the southeast corner of the mound.

April 12, 1971. McCombs Knutson Associates (Dickman Knutson, county surveyor) measured the north line of the section and set a temporary quarter corner on the center line of the east-west road in line with a power pole line to the south.

May, 1971. Knutson dug for the corner, John Tupa from Hutchinson with a backhoe. They found a small oval stone, 4 inches by 5 inches, set on end, down $1\frac{1}{2}$ feet below the road surface. They took reference ties and dug deeper. Down at 3 feet they found another stone, 5 inches by 8 inches, oval, with a sharp point up and a wood stake beside the stone. This was directly below the first stone. This stone was similar to stones found at other corners in this area.

November 2, 1971. Knutson set a McLeod County cast iron monument and took additional ties.

August 10, 1979. We found the monument in good condition and took new reference ties.

June 21, 1990. We found the monument and took new ties. We measured the north line of Section 1 and found the monument only 0.33 feet off of being on a split between the section corners. It also was only 1.85 feet north of a straight line between the section corners.

We accept the stones found by Knutson as having perpetuated the correct location of the quarter corner.